

HORSESHOE & QUIT PIT CLAYS



Beam Clay® Horseshoe & Quoit Pit Clay	2
Pro-Mound® Horseshoe Pit Clay.....	2
Diamond Pro® Horseshoe Pit Clay	2
SAF Mar Mound® Horseshoe Pit Clay.....	2
West Coast Horseshoe Pit Clay.....	2
Midwest/South Horseshoe Pit Clay	2
Hilltopper Polymerized Clay.....	2
Recommendations for Constructing & Resurfacing Horseshoe Pits	3
Horseshoe Pitch Court Layouts.....	4
Rubber Curbing	5-6
St.Pierre Pitching Horseshoes Sets	7-10

YOUR “ONE-STOP” SOURCE FOR AMERICA’S BASEBALL, SOFTBALL & SPORTS SURFACES & SUPPLIES!

PRICES SUBJECT TO CHANGE & AVAILABILITY PLUS SHIPPING | VOLUME DISCOUNTS AVAILABLE | COOPERATIVE PURCHASING CONTRACT PRICING FOR 50 STATES

PARTAC PEAT CORPORATION
ONE KELSEY PARK, GREAT MEADOWS, NEW JERSEY 07838

800-247-BEAM (2326) • (908) 637-4191 • FAX (908) 637-8421
www.beamclay.com • sales@beamclay.com
Bid Term - 5/9/18 - 5/8/20; Extended to 5/8/21; Extended to 5/8/22

BEAM CLAY®

WHOLESALE PRICE LIST EFFECTIVE: APRIL 23, 2021

Horseshoe Pit & Quoit Pit Clay

BEAM CLAY® HORSESHOE & QUOIT PIT CLAY - North Jersey Plant

50 lb. bags - up to 50/pallet.

		BULK PER TON		50 LB. BAGS
White - Extra Firm	BC-HSPC-W-BULK	\$145	BC-HSPC-W-BAG	\$11.50
Red - Extra Firm	BC-HSPC-R-BULK	\$135	BC-HSPC-R-BAG	\$10.50
Orange - Extra Firm	BC-HSPC-O-BULK	\$125	BC-HSPC-O-BAG	\$9.50
Brown - Extra Firm	BC-HSPC-B-BULK	\$125	BC-HSPC-B-BAG	\$9.50
Orange/Brown - Medium Firm	BC-HSPC-OB-BULK	\$125	BC-HSPC-OB-BAG	\$9.50
Grey - Medium Firm "Blue Gumbo"	BC-HSPC-G-BULK	\$115	BC-HSPC-G-BAG	\$7.50
Tan - Medium Firm	BC-HSPC-T-BULK	\$115	BC-HSPC-T-BAG	\$7.50
Orange - Firm Yet Soft (<i>Easier to maintain, recommended for recreational & residential use</i>)	BC-HSPC-BD-BULK	\$85	BC-HSPC-BD-BAG	\$7

PRO MOUND® HORSESHOE & QUOIT PIT CLAY Extra Firm, 50 lb. bags - full pallets of 40 only from CA, MS, up to 40 bags/pallet from IL, IN & NJ.

Extra Firm "Blue Gumbo" IL Plant	A56799B	\$329	A56799-IL	\$12.85
Extra Firm "Blue Gumbo" MS Plant		—	A56799	\$15.50
Extra Firm "Blue Gumbo" CA Plant		—	A56799-CA	\$20.50
Extra Firm "Blue Gumbo" NJ Plant		—	A56799-NJ	\$20.50

DIAMOND PRO® HORSESHOE & QUOIT PIT CLAY 50 lb. bags - full pallets of 40 only.

CLAY (Medium Firm, Reddish Brown) TX Plant		—	DP-HSPC-MED-BAG	\$10.25
CLAY (Extra Firm, Tan) TX Plant		—	DP-HSPC-EFIRM-BAG	\$10.50
RED (Much looser, soft surface) TX Plant (<i>Easier to maintain, recommended for recreational & residential use</i>)		—	DP-HSPC-RED-BAG	\$8.95

REGIONAL HORSESHOE & QUOIT PIT CLAYS

WEST COAST

		2000 LB. BULK BAG	
RED - Extra-Firm, One Ton Bulk Bags	WC-HSPC-XF-BAG	\$265	—
RED - Firm yet soft, One Ton Bulk Bags (<i>Easier to maintain, recommended for recreational & residential use</i>)	WC-HSPC-SOFT-BAG	\$195	—

MIDWEST & SOUTH

BROWN/RED - Extra Firm, One Ton Bulk Bags	M/S-HSPC-XF-BAG	\$315	—
RED/ORANGE - Medium Firm, One Ton Bulk Bags	M/S-HSPC-MF-BAG	\$285	—
RED - Firm yet soft, One Ton Bulk Bags (<i>Easier to maintain, recommended for recreational & residential use</i>)	M/S-HSPC-SOFT-BAG	\$265	—

HILLTOPPER® POLYMERIZED HORSESHOE & QUOIT PIT CLAY Medium Firm Red, Polymer enhanced - Doesn't need water to install or maintain! Just spread and tamp. Retains resilience. Ready for play! Repels water—never gets muddy, but shoes will only slide, not stick. 50 lb. bags - up to 40/pallet.

AZ Plant		—	HT-AZ-BAG	\$18.50
NJ Warehouse		—	HT-NJ-BAG	\$28.50

PALLET & COVER CHARGE - \$6.50/PALLET, UP TO 50 BAGS/PALLET. #NJ-PALLET

YOUR "ONE-STOP" SOURCE FOR AMERICA'S BASEBALL, SOFTBALL & SPORTS SURFACES & SUPPLIES!

PRICES SUBJECT TO CHANGE & AVAILABILITY PLUS SHIPPING | VOLUME DISCOUNTS AVAILABLE | COOPERATIVE PURCHASING CONTRACT PRICING FOR 50 STATES

BEAM CLAY®

Horseshoe & Quoit Pits

RECOMMENDATIONS FOR CONSTRUCTING BEAM CLAY® HORSESHOE PITS

1. Make frame of 2 x 8's.
2. Place entire frame on 3-4" drainage bed of uniform sand, or 3/4" minus stone (with fines) covered with a 1/2" layer of uniform sand. Drainage bed should be larger than frame by at least one foot all around.
IMPORTANT - Install drainage bed first with frame on top.
3. Apply 8" of **Beam Clay®** Horseshoe Pit Clay, 2" at a time, wetting and compacting each layer.
4. Two (6' x 6') boxes 8" deep require 2-1/2 tons (or 100 bags) of **Beam Clay®** Horseshoe Pit Clay.
Two (3' x 4') boxes require 1,650 lbs. (or 33 bags).
5. For serious play, we recommend the **Red, Orange, Brown, or Grey** Extra Firm or Medium Firm grades. It is best to cover these when not in use — to keep excess moisture off from rain, yet keep moisture in when dry. When too hard & dry, these should be turned or dug up 4—6" deep and watered.

For most municipal and residential uses, we recommend the sandier **Soft Orange** grade, which does not need to be covered when not in use and is much easier to water if too dry.

RECOMMENDATIONS FOR RESURFACING EXISTING HORSESHOE PITS WITH BEAM CLAY®

If resurfacing an existing Horseshoe Pit clay surface, scarify surface approximately 1/2" in depth and incorporate 1/2" of **Beam Clay®** Horseshoe Pit Clay into that surface to form a bonding layer of the two materials. Then apply 2" of **Beam Clay®** Horseshoe Pit Clay, wetting and compacting as above.

YOUR "ONE-STOP" SOURCE FOR AMERICA'S BASEBALL, SOFTBALL & SPORTS SURFACES & SUPPLIES!

PRICES SUBJECT TO CHANGE & AVAILABILITY PLUS SHIPPING | VOLUME DISCOUNTS AVAILABLE | COOPERATIVE PURCHASING CONTRACT PRICING FOR 50 STATES

BEAM CLAY®

Horseshoe & Quoit Pits

HORSESHOE PITCH COURT LAYOUTS

RECOMMENDED AREA

Ground space is 1400 square feet, including clear space.

SIZE AND DIMENSION

Playing court is 10'x 50', plus a recommended 10' minimum unobstructed area on each end and a 5' minimum wide zone on each side.

ORIENTATION

Recommended orientation is for the long axis to be north-south.

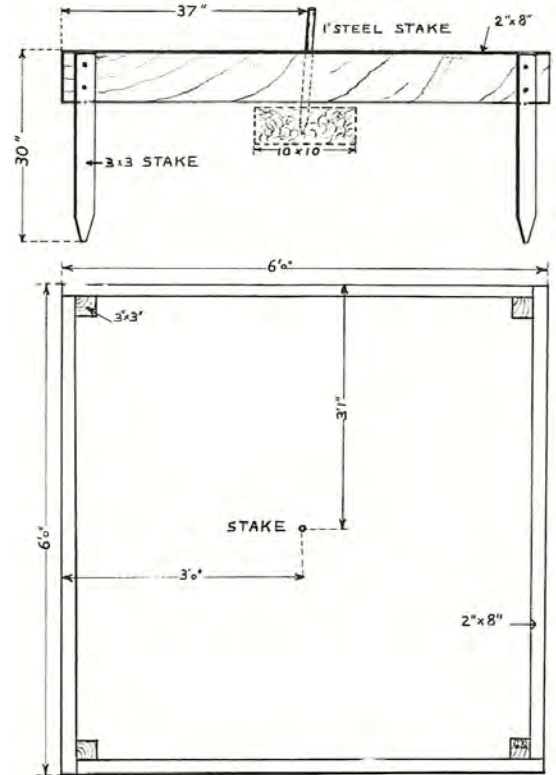
SURFACE AND DRAINAGE

Surface of playing area, except for boxes and optional concrete walkways, should be turf. Area should be pitched to the side at a maximum slope of 2%. Elevation and slant of steel pegs should be between 2" and 3" and equal.

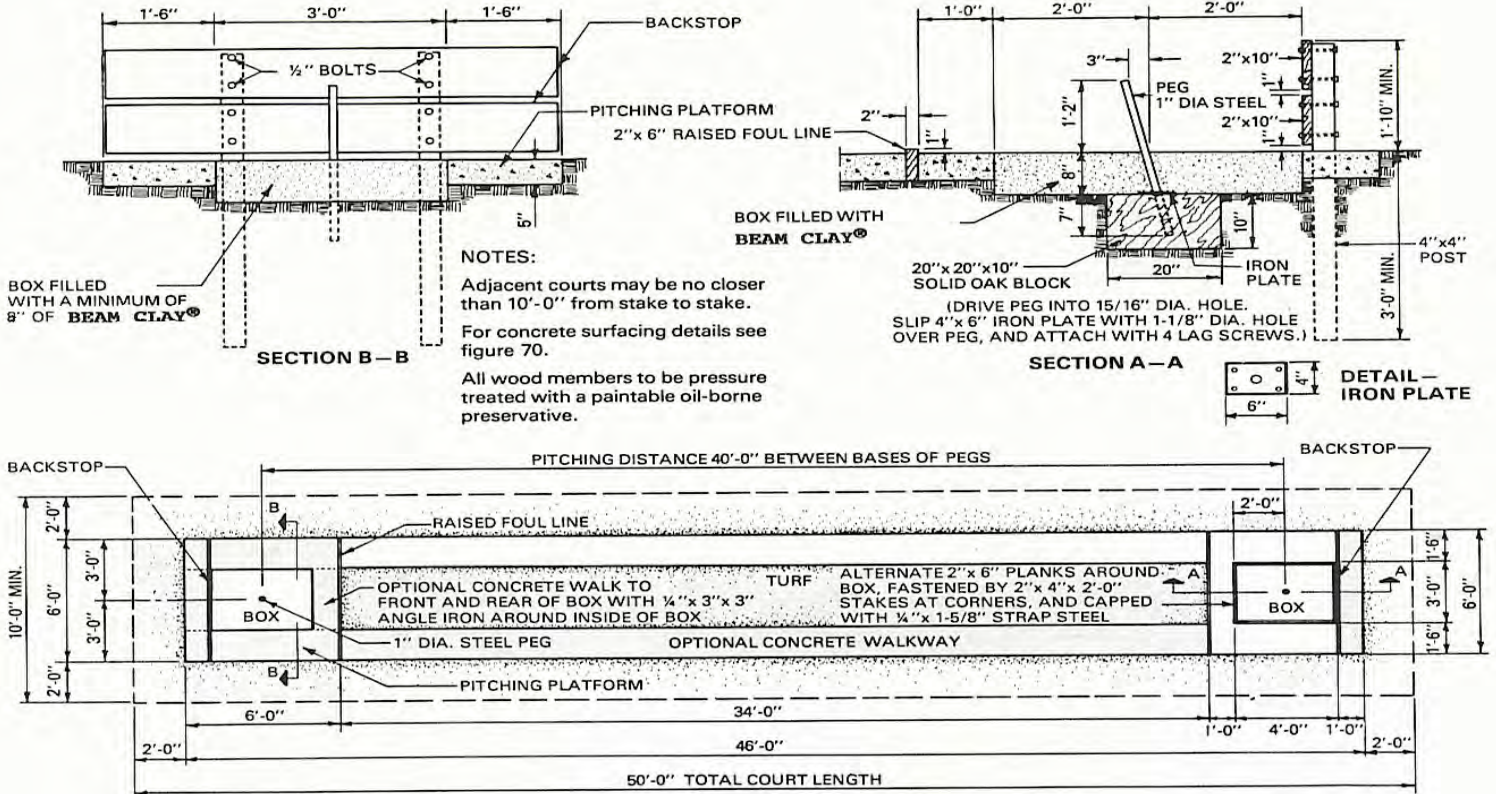
SPECIAL CONSIDERATIONS

Boxes are to be filled with **Beam Clay® Horseshoe Pit Mix**.
SAFETY: A 2' high backstop should be constructed at the end of the box to intercept overthrown or bounding shoes.

6' x 6' HORSESHOE PITCHING BOXES



3' X 4' HORSESHOE PITCHING BOXES



YOUR "ONE-STOP" SOURCE FOR AMERICA'S BASEBALL, SOFTBALL & SPORTS SURFACES & SUPPLIES!

PRICES SUBJECT TO CHANGE & AVAILABILITY PLUS SHIPPING | VOLUME DISCOUNTS AVAILABLE | COOPERATIVE PURCHASING CONTRACT PRICING FOR 50 STATES

BEAM CLAY®

Horseshoe Pits & Quoit Pits

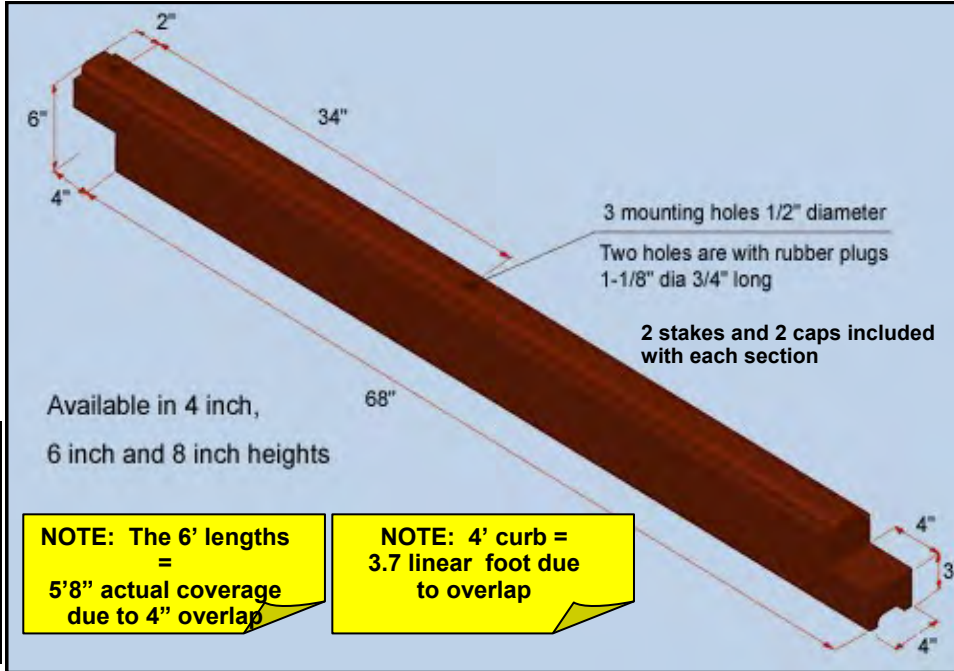
WHOLESALE PRICE LIST
 EFFECTIVE: JANUARY 1, 2021

RUBBER CURBING

PER PIECE

4" High x 4" Wide x 6' Long (30 lbs./piece, up to 99 pieces/pallet)	#RC-4X4X6	\$35
6" High x 4" Wide x 6' Long (45 lbs./piece, up to 63 pieces/pallet)	#RC-6X4X6	\$65
8" High x 4" Wide x 6' Long (70 lbs./piece, up to 45 pieces/pallet)	#RC-8X4X6	\$80
4" High x 3" Wide x 6' Long (20 lbs./piece, up to 100 pieces/pallet)	#RC-4X3X6	\$30
4" High x 3" Wide x 4' Long (13 lbs./piece, up to 140 pieces/pallet)	#RC-4X3X4	\$20

Please note: The 4" wide sections are grooved and can be stacked to create desired height. However, the 3" W is not stackable. 3" W lengths of curbing are not grooved for stacking.

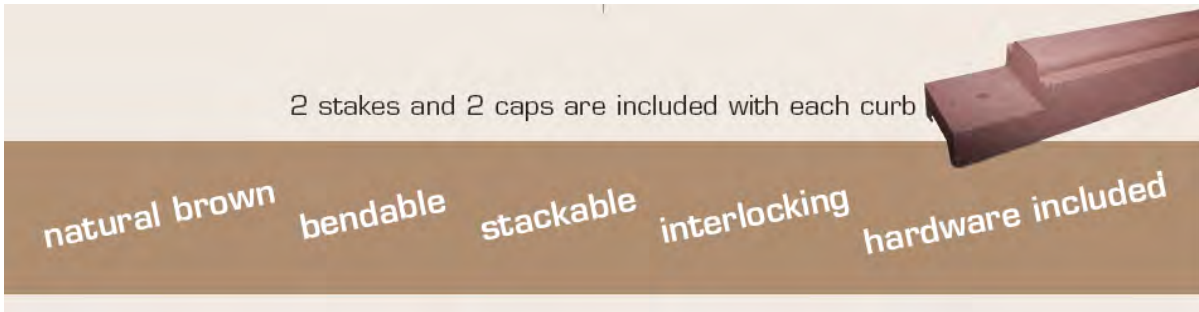


NOTE: The 6' lengths = 5'8" actual coverage due to 4" overlap

NOTE: 4' curb = 3.7 linear foot due to overlap

- More resilient than wood
- No warping or discoloring
- No splinters
- Non toxic
- Will not rot
- Stackable
- Interlocking
- Available in 4 ft lengths and 4" or 6 ft lengths and 4", 6" and 8" heights

- No CCA or other harmful chemicals
- Easy to install with pre drilled holes
- Made from 100% recycled tires
- Flexible with rounded edges
- Will not breed ticks, termites or other insects
- Maintenance free
- Hardware & Caps included
- Neutral brown tone-compatible with any surface color



YOUR "ONE-STOP" SOURCE FOR AMERICA'S BASEBALL, SOFTBALL & SPORTS SURFACES & SUPPLIES!

PRICES SUBJECT TO CHANGE & AVAILABILITY PLUS SHIPPING | VOLUME DISCOUNTS AVAILABLE | COOPERATIVE PURCHASING CONTRACT PRICING FOR 50 STATES

BEAM CLAY®

Horseshoe Pits & Quoit Pits

HORSESHOE PIT RUBBER CURBING

Product Specifications

Product Description:

1. Material: compression molded composite of the 100% recycled rubber and polyurethane prepolymer
2. Physical properties of the rubber composite:
 - a) Density 0.6 oz/cu in (ASTM C642)
 - b) Durometer Hardness 65A ± 7 (ASTM D2240)
 - c) Tensile Strength* minimum 125 psi (ASTM D412)
(* main structural areas)
 - d) Compression deformation 10% at 70psi, 68°F (ASTM D575)
 - e) Brittleness at Low temperature: -40°F (ASTM D746)
 - f) Freeze and thaw when exposed (ASTM C672)
to deicing chemicals no loss after 50 cycles
 - g) Coefficient of thermal expansion: 8 x10⁻⁵ in/in/°F (ASTM C531)
 - h) Weathering 70 hours at 158°F (ASTM D573)
 - hardness retained 100% (± 5%)
 - compressive strength 100% (± 5%)
 - tensile strength 100% (± 5%)
 - elongation retained 100% (± 5%)
3. Available models:
 - a) 4"W x 4"H x 72"L with weight of 30 lbs.
 - b) 4"W x 6"H x 72"L with weight of 45 lbs.
 - c) 4"W x 8"H x 72"L with weight of 70 lbs.
 - d) 3"W x 4"H x 72"L with weight of 20 lbs.
 - e) 3"W x 4"H x 48"L with weight of 13 lbs.
4. Finishing color: dark brown

Installation methods:

- a) with 2 spikes 18" long x 3/8" diameter provided for each 4" high piece
- b) with 2 spikes 24" long x 3/8" diameter provided for each 6" high or 8" high piece

Note: The mounting holes can be closed after installation with the rubber plugs 1-1/8 diameter and 3/4" long, supplied with the product.

Components:

- a) 100% recycled rubber from car and truck tires (NR, SBR)
- b) polyurethane prepolymer for rubber granules
- c) brown pigment

YOUR "ONE-STOP" SOURCE FOR AMERICA'S BASEBALL, SOFTBALL & SPORTS SURFACES & SUPPLIES!

PRICES SUBJECT TO CHANGE & AVAILABILITY PLUS SHIPPING | VOLUME DISCOUNTS AVAILABLE | COOPERATIVE PURCHASING CONTRACT PRICING FOR 50 STATES

BEAM CLAY®

St.Pierre Pitching Horseshoes Sets

WHOLESALE PRICE LIST
 EFFECTIVE: JANUARY 1, 2021

Pitching Horseshoes

The St.Pierre family has been forging Authentic Pitching Horseshoes since 1938. They are the only remaining manufacturer of pitching horseshoes still in the USA. Their highly recognizable, trademark designed horseshoes are all **Made in the USA** and forged of solid steel for balance and control. Our horseshoes are coated with a special non-slip finish that is superior to high gloss finishes and helps prevent chipping and corrosion. St.Pierre Sports has been offering customers consistent quality and on-time delivery for more than 75 years.

ROYAL CLASSIC HORSESHOES #RC5

The Royal is our most popular seller and is considered America's favorite backyard horseshoe. Ideal for family and backyard fun, parks, and organizations. Equipment necessary for 2-4 person play, 4 forged steel Royal horseshoes, 2 solid steel stakes (24"), and official rulebook. Comes with our unique, easy to carry, gray plastic tote. NHPA approved.

Features:

Proudly Made in the USA

- Ideal for family and backyard fun, parks, and organizations
- NHPA Approved
- Set contains all the equipment necessary for 2 to 4 person play.
- Includes 4 solid steel horseshoes with a baked-on, non-slip finish that is electrostatically applied
- Finish is more resistant to chipping, corrosion and weathering than other coatings
- Set includes two 24" solid steel stakes, rulebook and an easy-to-carry case
- Approved for Tournament play

Contents:

- 2 blue and 2 red Royal horseshoes
- 2—24" solid steel stakes
- Official rulebook with court layout
- Comes in a unique, easy to carry, gray plastic tote

Product Dimensions (L x W x H) & Weight (lbs):
 26 3/4" x 7 3/4" x 2 3/16" | 16.5 lbs.



RC5

RC5	Royal Classic Outfit – in Molded Plastic Case 2 blue shoes, 2 red shoes, 2 solid steel stakes, and official rulebook with court layout in a unique, easy to carry, gray plastic tote box.	\$44.95/EA
RS2	Royal Classic SET – 4 Shoes, No Stakes 2 blue shoes, 2 red shoes, and official rulebook with court layout in a corrugated box.	\$35/SET
RS1	Royal Classic PAIR – 2 Shoes, No Stakes 2 shoes and official rulebook with court layout in a corrugated box.	\$30/PR

RS2



RS1



YOUR "ONE-STOP" SOURCE FOR AMERICA'S BASEBALL, SOFTBALL & SPORTS SURFACES & SUPPLIES!

PRICES SUBJECT TO CHANGE & AVAILABILITY PLUS SHIPPING | VOLUME DISCOUNTS AVAILABLE | COOPERATIVE PURCHASING CONTRACT PRICING FOR 50 STATES

BEAM CLAY®

St.Pierre Pitching Horseshoes Sets

WHOLESALE PRICE LIST
 EFFECTIVE: JANUARY 1, 2021

Pitching Horseshoes

The St.Pierre family has been forging Authentic Pitching Horseshoes since 1938. They are the only remaining manufacturer of pitching horseshoes still in the USA. Their highly recognizable, trademark designed horseshoes are all **Made in the USA** and forged of solid steel for balance and control. Our horseshoes are coated with a special non-slip finish that is superior to high gloss finishes and helps prevent chipping and corrosion. St.Pierre Sports has been offering customers consistent quality and on-time delivery for more than 75 years.

AMERICAN PRESIDENTIAL HORSESHOES #AW5

American Presidential Outfit – in Wood Box 2 hammer-tone bronze shoes, 2 hammer-tone silver shoes, 2 solid steel stakes, and official rulebook with court layout in an old fashioned mahogany stained wood box.

Features:

Proudly Made in the USA

- NHPA Approved for Tournament play
- Ideal for special gifts, leagues, clubs, and serious players.
- More weight forged into the tips for maximum balance and control
- Tapered leading edge that allows the shoe to slide onto the stake
- Longer tips to grab the stake for more ringers
- Ringer breaker to rotate the shoe and lock in ringers
- Finger positioner to help hold the shoe like the Pros
- Set includes two 24" solid steel stakes, rulebook, and Mahogany stained carrying case
- Set contains all the equipment necessary for 2 to 4 person play.



Contents:

- 2 silver and 2 gold American horseshoes
- 2—24" silver stakes
- Rulebook with court layout
- Comes in an old fashioned, attractive pine box with mahogany finish, built in handle, and burnt in logo

Product Dimensions (L x W x H) & Weight (lbs.):
 26 1/2" x 9 1/8" x 2 5/8" | 22 lbs.

AW5 American Presidential Outfit \$79.95/EA



RS Standard Replacement Horseshoe Stakes
 1 pair (2) solid steel stakes, 3/4" diameter x 23.5" long \$24.95/PR

RS36 Tournament Replacement Horseshoe Stakes
 1 pair (2) solid steel stakes, 1" diameter x 36" long \$40.95/PR

YOUR "ONE-STOP" SOURCE FOR AMERICA'S BASEBALL, SOFTBALL & SPORTS SURFACES & SUPPLIES!

PRICES SUBJECT TO CHANGE & AVAILABILITY PLUS SHIPPING | VOLUME DISCOUNTS AVAILABLE | COOPERATIVE PURCHASING CONTRACT PRICING FOR 50 STATES

BEAM CLAY®

St.Pierre Pitching Horseshoes Sets

WHOLESALE PRICE LIST
 EFFECTIVE: JANUARY 1, 2021

Pitching Horseshoes

The St.Pierre family has been forging Authentic Pitching Horseshoes since 1938. They are the only remaining manufacturer of pitching horseshoes still in the USA. Their highly recognizable, trademark designed horseshoes are all **Made in the USA** and forged of solid steel for balance and control. Our horseshoes are coated with a special non-slip finish that is superior to high gloss finishes and helps prevent chipping and corrosion. St.Pierre Sports has been offering customers consistent quality and on-time delivery for more than 75 years.

AMERICAN PROFESSIONAL HORSESHOES #AC5

The American Professional is designed by a World Champion horseshoe pitcher. Its unique shape and exclusive trademark design make it superior to other horseshoes. The American is made from solid steel and has more weight forged into the tips for maximum balance and control. Other features include a tapered leading edge that allows the shoe to slide onto the stake, longer tips to grab the stake for more ringers, a ringer breaker to rotate the shoe and lock in ringers, and a finger positioner to help hold the shoe like the Pros. Ideal for leagues, clubs and serious players. Equipment necessary for 2-4 person play, 4 forged steel American horseshoes, 2 solid steel stakes (24"), and official rulebook. Comes with our unique, easy to carry, black plastic tote. NHPA approved.

Features:

Proudly Made in the USA

- NHPA Approved for Tournament play
- Ideal for leagues, clubs and serious players
- More weight forged into the tips for maximum balance and control
- Tapered leading edge that allows the shoe to slide onto the stake
- Longer tips to grab the stake for more ringers
- Ringer breaker to rotate the shoe and lock in ringers
- Finger positioner to help hold the shoe like the Pros
- Set contains all the equipment necessary for 2 to 4 person play.
- Includes 4 solid steel horseshoes with a baked-on, non-slip finish that is electrostatically applied
- Finish is more resistant to chipping, corrosion and weathering than other coatings
- Also includes two 24-in solid steel stakes, rulebook and an easy-to-carry case

Contents:

- 2 blue and 2 gray American horseshoes
- 2 24" silver stakes
- Rulebook with court layout
- Comes in a unique, easy to carry, black plastic tote

Product Dimensions (L x W x H) & Weight (lbs):
 26 3/4" x 7 3/4" x 2 3/16" | 18 lbs.



AC5

AC5	American Professional Outfit – in Molded Plastic Case 2 blue shoes, 2 gray shoes, 2 solid steel stakes, and official rulebook with court layout in a unique, easy to carry, black plastic tote box.	\$59.95/EA
A03	American Professional Outfit – in Corrugated Box with Nylon Tote Bag 2 blue shoes, 2 gray shoes, 2 solid steel stakes, and official rulebook with court layout in a durable, nylon tote bag.	\$60/EA
AS2	American Professional SET – in Corrugated Box 2 blue shoes, 2 gray shoes, and official rulebook with court layout in a corrugated box. Shoes are weighed and balanced at the factory.	\$45/SET
AS1	American Professional PAIR – in Corrugated Box 2 blue shoes and official rulebook with court layout in a corrugated box. Shoes are weighed and balanced at the factory.	\$33/PR



AS2



A03



AS1

YOUR "ONE-STOP" SOURCE FOR AMERICA'S BASEBALL, SOFTBALL & SPORTS SURFACES & SUPPLIES!

PRICES SUBJECT TO CHANGE & AVAILABILITY PLUS SHIPPING | VOLUME DISCOUNTS AVAILABLE | COOPERATIVE PURCHASING CONTRACT PRICING FOR 50 STATES

BEAM CLAY®

St.Pierre Pitching Horseshoes Sets

WHOLESALE PRICE LIST
 EFFECTIVE: JANUARY 1, 2021

Pitching Horseshoes

The St.Pierre family has been forging Authentic Pitching Horseshoes since 1938. They are the only remaining manufacturer of pitching horseshoes still in the USA. Their highly recognizable, trademark designed horseshoes are all **Made in the USA** and forged of solid steel for balance and control. Our horseshoes are coated with a special non-slip finish that is superior to high gloss finishes and helps prevent chipping and corrosion. St.Pierre Sports has been offering customers consistent quality and on-time delivery for more than 75 years.

EAGLE TOURNAMENT HORSESHOES

AVAILABLE FOR ON-LINE SALES ONLY- NO RETAIL PACKAGING

The Eagle Tournament Horseshoe is for players that want the best in order to bring their game to a new level. They are forged with larger tips and have 1" hooks designed to grab the stake and stay on. There is more weight forged into the ends so players have more consistency throughout their swing and can better control where the shoe goes. The ringer breaker helps turn the shoe and the smooth inside curve helps glide the stake down to the larger hooks. Sets are ideal for leagues, clubs, and serious players. Shoes are official size and weight and are NHPA approved for TOURNAMENT PLAY. Made in the USA.

Features:

- Proudly Made in the USA
- NHPA Approved for Tournament play
- Forged steel - forged, not cast, for strength
- More weight in the tips for greater throwing control, balance and accuracy. More controlled/precise throws means more ringers
- Tips are longer from side to side to more easily grab the stake
- Larger 1" round hooks are designed to grab an official 1" stake & stay on
- Angled/exaggerated tapered leading edge that runs from the points to the hook allows shoe to more easily slide past the tip and on to the stake
- Smooth inside curved edge - the rounded inside curve of the shoe allows the shoe to turn smoothly until the hooks can grab the stake
- Ringer breaker - protrusion to turn the shoe so that the hooks can grab the stake
- Shoes will ring when they hit the stake and will not break under normal use
- Forged steel to ring, not break
- Allows for more comfortable grip
- Official size and weight shoes and stakes for tournament play

Contents:

- 2 blue and 2 gray American horseshoes
- 2 24" silver stakes
- Rulebook with court layout
- Sturdy black nylon carry bag



Product Dimensions (L x W x H) & Weight (lbs):
 2" H x 25" W x 10" D | 19 lbs.



- EC5 Eagle Tournament Outfit – in Nylon Bag**
 2 blue shoes, 2 gray shoes, 2 solid steel stakes, and official rulebook with court layout in a sturdy black nylon carry bag. \$94.95/EA
- ES2 Eagle Tournament SET – in Corrugated**
 2 blue shoes, 2 gray shoes, and official rulebook with court layout in a corrugated box. Shoes are weighed and balanced at the factory. \$74.95/SET
- ES1 Eagle Tournament PAIR – in Corrugated**
 2 blue shoes and official rulebook with court layout in a corrugated box. Shoes are weighed and balanced at the factory. \$49.95/PR



YOUR "ONE-STOP" SOURCE FOR AMERICA'S BASEB

PRICES SUBJECT TO CHANGE & AVAILABILITY PLUS SHIPPING | VOLUME DISCOUNTS AVAILABLE | COOPERATIVE PURCHASING CONTRACT PRICING FOR 50 STATES

Partac Peat Corporation – Item Price Schedule													
Athletic Equipment & Supplies BID# ESCNJ 17/18-31 Effective 5/9/2018 - 5/8/2022													
Bidding Company Name:				Partac Peat Corporation		Catalog Name:		6 - Horseshoe & Quoit Pit Clays					
No.	Product Category	Beam Clay Catalog Section #	Page#	Product Description	Manufacturer	Vendor SKU	Unit of Measure	Catalog List Price	Bid Discount Percentage	Discount Amt.	Net Effective Bid Price	Comments	No.
1	Other: Horseshoes & Quoits	6	2	Beam Clay Horseshoe Pit Clay-Red - Extra Firm - Bulk BC-HSPC-R-BULK	Partac Peat Corporation	BC-HSPC-R-BULK	TON	\$ 135.000	5.0%	\$ 6.750	\$ 128.250	+ shipping - see freight notes	1
2	Other: Horseshoes & Quoits	6	2	Beam Clay Horseshoe Pit Clay-Red - Extra Firm - Bag BC-HSPC-R-BAG	Partac Peat Corporation	BC-HSPC-R-BAG	50 LB BAG	\$ 10.500	5.0%	\$ 0.525	\$ 9.975	+ shipping - see freight notes	2
3	Other: Horseshoes & Quoits	6	2	Beam Clay Horseshoe Pit Clay-White - Extra Firm - Bag BC-HSPC-W-BULK	Partac Peat Corporation	BC-HSPC-W-BULK	BULK	\$ 145.000	5.0%	\$ 7.250	\$ 137.750	+ shipping - see freight notes	3
4	Other: Horseshoes & Quoits	6	2	Beam Clay Horseshoe Pit Clay-White - Extra Firm - Bag BC-HSPC-W-BAG	Partac Peat Corporation	BC-HSPC-W-BAG	50 LB BAG	\$ 11.500	5.0%	\$ 0.575	\$ 10.925	+ shipping - see freight notes	4
5	Other: Horseshoes & Quoits	6	2	Beam Clay Horseshoe Pit Clay-Orange - Extra Firm - Bulk BC-HSPC-O-BULK	Partac Peat Corporation	BC-HSPC-O-BULK	TON	\$ 125.000	5.0%	\$ 6.250	\$ 118.750	+ shipping - see freight notes	5
6	Other: Horseshoes & Quoits	6	2	Beam Clay Horseshoe Pit Clay-Orange - Extra Firm - Bag BC-HSPC-O-BAG	Partac Peat Corporation	BC-HSPC-O-BAG	50 LB BAG	\$ 9.500	5.0%	\$ 0.475	\$ 9.025	+ shipping - see freight notes	6
7	Other: Horseshoes & Quoits	6	2	Beam Clay Horseshoe Pit Clay-Brown - Extra Firm - Bulk BC-HSPC-B-BULK	Partac Peat Corporation	BC-HSPC-B-BULK	TON	\$ 125.000	5.0%	\$ 6.250	\$ 118.750	+ shipping - see freight notes	7
8	Other: Horseshoes & Quoits	6	2	Beam Clay Horseshoe Pit Clay-Brown - Extra Firm - Bag BC-HSPC-B-BAG	Partac Peat Corporation	BC-HSPC-B-BAG	50 LB BAG	\$ 9.500	5.0%	\$ 0.475	\$ 9.025	+ shipping - see freight notes	8
9	Other: Horseshoes & Quoits	6	2	Beam Clay Horseshoe Pit Clay-Orange/Brown - Medium Firm - Bulk BC-HSPC-OB-BULK	Partac Peat Corporation	BC-HSPC-OB-BULK	TON	\$ 125.000	5.0%	\$ 6.250	\$ 118.750	+ shipping - see freight notes	9
10	Other: Horseshoes & Quoits	6	2	Beam Clay Horseshoe Pit Clay-Orange/Brown - Medium Firm - Bag BC-HSPC-OB-BAG	Partac Peat Corporation	BC-HSPC-OB-BAG	50 LB BAG	\$ 9.500	5.0%	\$ 0.475	\$ 9.025	+ shipping - see freight notes	10
11	Other: Horseshoes & Quoits	6	2	Beam Clay Horseshoe Pit Clay-Grey -Medium Firm "Blue Gumbo" - Bulk BC-HSPC-G-BULK	Partac Peat Corporation	BC-HSPC-G-BULK	TON	\$ 115.000	5.0%	\$ 5.750	\$ 109.250	+ shipping - see freight notes	11
12	Other: Horseshoes & Quoits	6	2	Beam Clay Horseshoe Pit Clay-Grey -Medium Firm "Blue Gumbo" - Bag BC-HSPC-G-BAG	Partac Peat Corporation	BC-HSPC-G-BAG	50 LB BAG	\$ 7.500	5.0%	\$ 0.375	\$ 7.125	+ shipping - see freight notes	12
13	Other: Horseshoes & Quoits	6	2	Beam Clay Horseshoe Pit Clay-Tan - Medium Firm - Bulk BC-HSPC-T-BULK	Partac Peat Corporation	BC-HSPC-T-BULK	TON	\$ 115.000	5.0%	\$ 5.750	\$ 109.250	+ shipping - see freight notes	13
14	Other: Horseshoes & Quoits	6	2	Beam Clay Horseshoe Pit Clay-Tan - Medium Firm - Bag BC-HSPC-T-BAG	Partac Peat Corporation	BC-HSPC-T-BAG	50 LB BAG	\$ 7.500	5.0%	\$ 0.375	\$ 7.125	+ shipping - see freight notes	14
15	Other: Horseshoes & Quoits	6	2	Beam Clay Horseshoe Pit Clay-Orange - Firm Yet Soft - Bulk BC-HSPC-BD-BULK	Partac Peat Corporation	BC-HSPC-BD-BULK	TON	\$ 85.000	5.0%	\$ 4.250	\$ 80.750	+ shipping - see freight notes	15
16	Other: Horseshoes & Quoits	6	2	Beam Clay Horseshoe Pit Clay-Orange - Firm Yet Soft - Bag BC-HSPC-BD-BAG	Partac Peat Corporation	BC-HSPC-BD-BAG	50 LB BAG	\$ 7.000	5.0%	\$ 0.350	\$ 6.650	+ shipping - see freight notes	16
17	Other: Horseshoes & Quoits	6	2	Pro-Mound Horseshoe Pit Clay- Extra Firm "Blue Gumbo" - Bulk - IL Plant A56799B	Pro-Mound	A56799B	TON	\$ 329.000	5.0%	\$ 16.450	\$ 312.550	+ shipping - see freight notes	17
18	Other: Horseshoes & Quoits	6	2	Pro-Mound Horseshoe Pit Clay- Extra Firm "Blue Gumbo" - Bag - IL Plant A56799-IL	Pro-Mound	A56799-IL	50 LB BAG	\$ 12.850	5.0%	\$ 0.643	\$ 12.208	+ shipping - see freight notes	18
19	Other: Horseshoes & Quoits	6	2	Pro-Mound Horseshoe Pit Clay- Extra Firm "Blue Gumbo" - Bag - MS Plant A56799	Pro-Mound	A56799	50 LB BAG	\$ 15.500	5.0%	\$ 0.775	\$ 14.725	+ shipping - see freight notes	19
20	Other: Horseshoes & Quoits	6	2	Pro-Mound Horseshoe Pit Clay- Extra Firm "Blue Gumbo" - Bag - CA Plant A56799-CA	Pro-Mound	A56799-CA	50 LB BAG	\$ 20.500	5.0%	\$ 1.025	\$ 19.475	+ shipping - see freight notes	20
21	Other: Horseshoes & Quoits	6	2	Pro-Mound Horseshoe Pit Clay- Extra Firm "Blue Gumbo" - Bag - NJ Plant A56799-NJ	Pro-Mound	A56799-NJ	50 LB BAG	\$ 20.500	5.0%	\$ 1.025	\$ 19.475	+ shipping - see freight notes	21
22	Other: Horseshoes & Quoits	6	2	Diamond Pro Horseshoe Pit Clay - (Medium Firm, Reddish Brown) - Bag - TX Plant	Diamond Pro	DP-HSPC-MED-BAG	50 LB BAG	\$ 10.250	5.0%	\$ 0.513	\$ 9.738	+ shipping - see freight notes	22
23	Other: Horseshoes & Quoits	6	2	Diamond Pro Horseshoe Pit CLAY - (Extra Firm, Tan) - Bag - TX Plant DP-HSPC-MED-BAG	Diamond Pro	DP-HSPC-EFIRM-BAG	50 LB BAG	\$ 10.500	5.0%	\$ 0.525	\$ 9.975	+ shipping - see freight notes	23
24	Other: Horseshoes & Quoits	6	2	Diamond Pro Horseshoe Pit CLAY - RED (Much looser, soft surface) - Bag - TX Plant DP-HSPC-RED-BAG	Diamond Pro	DP-HSPC-RED-BAG	50 LB BAG	\$ 8.950	5.0%	\$ 0.448	\$ 8.503	+ shipping - see freight notes	24
25	Other: Horseshoes & Quoits	6	2	West Coast Horseshoe Pit Clay - Red - Extra Firm - One Ton Bulk Bag WC-HSPC-XF-BAG	Regional Plant	WC-HSPC-XF-BAG	2000 LB BAG	\$ 265.000	5.0%	\$ 13.250	\$ 251.750	+ shipping - see freight notes	25
26	Other: Horseshoes & Quoits	6	2	West Coast Horseshoe Pit Clay - Red-Firm Yet Soft - One Ton Bulk Bag WC-HSPC-SOFT-BAG	Regional Plant	WC-HSPC-SOFT-BAG	2000 LB BAG	\$ 195.000	5.0%	\$ 9.750	\$ 185.250	+ shipping - see freight notes	26
27	Other: Horseshoes & Quoits	6	2	Midwest/South Horseshoe Pit Clay - Brown/Red - Extra Firm - One-Ton Bulk Bag M/S-HSPC-XF-BAG	Regional Plant	M/S-HSPC-XF-BAG	2000 LB BAG	\$ 325.000	5.0%	\$ 16.250	\$ 308.750	+ shipping - see freight notes	27
28	Other: Horseshoes & Quoits	6	2	Midwest/South Horseshoe Pit Clay - Red/Orange Medium Firm - One Ton Bulk Bag M/S-HSPC-MF-BAG	Regional Plant	M/S-HSPC-MF-BAG	2000 LB BAG	\$ 295.000	5.0%	\$ 14.750	\$ 280.250	+ shipping - see freight notes	28
29	Other: Horseshoes & Quoits	6	2	Midwest/South Horseshoe Pit Clay - Red - Firm Yet Soft - One Ton Bulk Bag M/S-HSPC-SOFT-BAG	Regional Plant	M/S-HSPC-SOFT-BAG	2000 LB BAG	\$ 265.000	5.0%	\$ 13.250	\$ 251.750	+ shipping - see freight notes	29
30	Other: Horseshoes & Quoits	6	2	Hilltopper Polymerized Horseshoe & Quoit Pit Clay - Medium Firm Red - 50 lb. bag - AZ Plant	Regional Plant	#HT-AZ-BAG	50 LB BAG	\$ 18.500	5.0%	\$ 0.925	\$ 17.575	+ shipping - see freight notes	30
31	Other: Horseshoes & Quoits	6	2	Hilltopper Polymerized Horseshoe & Quoit Pit Clay - Medium Firm Red - 50 lb. bag - NJ Warehouse HT-NJ-BAG	Regional Plant	HT-NJ-BAG	50 LB BAG	\$ 28.500	5.0%	\$ 1.425	\$ 27.075	+ shipping - see freight notes	31
32	Other: Horseshoes & Quoits	6	5	Rubber Curbing - 4" High x 3" Wide x 6' Long #RC-4x3x6	RubberRecycle	RC-4x3x6	PIECE	\$ 30.000	5.0%	\$ 1.500	\$ 28.500	+ shipping - see freight notes	32

Bidding Company Name:				Partac Peat Corporation		Catalog Name:		6 - Horseshoe & Quoit Pit Clays					
No.	Product Category	Beam Clay Catalog Section #	Page#	Product Description	Manufacturer	Vendor SKU	Unit of Measure	Catalog List Price	Bid Discount Percentage	Discount Amt.	Net Effective Bid Price	Comments	No.
33	Other: Horseshoes & Quoits	6	5	Rubber Curbing - 6" High x 4" Wide x 6' Long #RC-6x4x6	RubberRecycle	RC-6x4x6	PIECE	\$ 65.000	5.0%	\$ 3.250	\$ 61.750	+ shipping - see freight notes	33
34	Other: Horseshoes & Quoits	6	5	Rubber Curbing - 4" High x 4" Wide x 6' Long #RC-4x4x6	RubberRecycle	RC-4x4x6	PIECE	\$ 35.000	5.0%	\$ 1.750	\$ 33.250	+ shipping - see freight notes	34
35	Other: Horseshoes & Quoits	6	5	Rubber Curbing - 8" High x 4" Wide x 6' Long #RC-8x4x6	RubberRecycle	RC-8x4x6	PIECE	\$ 80.000	5.0%	\$ 4.000	\$ 76.000	+ shipping - see freight notes	35
36	Other: Horseshoes & Quoits	6	5	Rubber Curbing - 4" High x 3" Wide x 4' Long #RC-4x3x4	RubberRecycle	RC-4x3x4	PIECE	\$ 20.000	5.0%	\$ 1.000	\$ 19.000	+ shipping - see freight notes	36
37	Other: Horseshoes & Quoits	6	various	FULL OR PARTIAL PALLETS: PALLET & COVER CHARGES FROM NJ	Partac Peat Corporation	NJ-PALLET	EACH	\$ 6.500	5.0%	\$ 0.325	\$ 6.175	+ shipping - see freight notes	37
38	Other: Horseshoes & Quoits	6	7	St. Pierre Pitching Horseshoes - Royal Classic Outfit - in Molded Plastic Case RC5	St. Pierre	RC5	EACH	\$ 44.950	5.0%	\$ 2.248	\$ 42.703	+ shipping - see freight notes	38
39	Other: Horseshoes & Quoits	6	7	St. Pierre Pitching Horseshoes - Royal Classic Set - 4 Shoes, No Stakes RS2	St. Pierre	RS2	SET	\$ 35.000	5.0%	\$ 1.750	\$ 33.250	+ shipping - see freight notes	39
40	Other: Horseshoes & Quoits	6	7	St. Pierre Pitching Horseshoes - Royal Classic Pair - 2 Shoes, No Stakes RS1	St. Pierre	RS1	PAIR	\$ 30.000	5.0%	\$ 1.500	\$ 28.500	+ shipping - see freight notes	40
41	Other: Horseshoes & Quoits	6	8	St. Pierre Pitching Horseshoes - American Presidential Outfit - In wooden box - 2 hammer-tone bronze shoes, 2 hammer-tone silver shoes, 2 solid steel stakes	St. Pierre	AW5	EACH	\$ 79.950	5.0%	\$ 3.998	\$ 75.953	+ shipping - see freight notes	41
42	Other: Horseshoes & Quoits	6	8	St. Pierre Pitching Horseshoes - American Presidential - Standard Replacement Horseshoes Stakes - 1 pair RS	St. Pierre	RS	PAIR	\$ 24.950	5.0%	\$ 1.248	\$ 23.703	+ shipping - see freight notes	42
43	Other: Horseshoes & Quoits	6	8	St. Pierre Pitching Horseshoes - American Presidential - Tournament Replacement Horseshoes Stakes - 1 pair #RS36	St. Pierre	RS36	PAIR	\$ 40.950	5.0%	\$ 2.048	\$ 38.903	+ shipping - see freight notes	43
44	Other: Horseshoes & Quoits	6	9	St. Pierre Pitching Horseshoes - American Professional Outfit In Molded Plastic Case AC5	St. Pierre	AC5	EACH	\$ 59.950	5.0%	\$ 2.998	\$ 56.953	+ shipping - see freight notes	44
45	Other: Horseshoes & Quoits	6	9	St. Pierre Pitching Horseshoes - American Professional Outfit - in Corrugated Box with Nylon Tote Bag AO3	St. Pierre	AO3	EACH	\$ 60.000	5.0%	\$ 3.000	\$ 57.000	+ shipping - see freight notes	45
46	Other: Horseshoes & Quoits	6	9	St. Pierre Pitching Horseshoes - American Professional Set AS2	St. Pierre	AS2	SET	\$ 45.000	5.0%	\$ 2.250	\$ 42.750	+ shipping - see freight notes	46
47	Other: Horseshoes & Quoits	6	9	St. Pierre Pitching Horseshoes - American Professional Pair AS1	St. Pierre	AS1	PAIR	\$ 33.000	5.0%	\$ 1.650	\$ 31.350	+ shipping - see freight notes	47
48	Other: Horseshoes & Quoits	6	10	St. Pierre Pitching Horseshoes - Eagle Tournament Outfit - in Nylon Bag EC5	St. Pierre	EC5	EACH	\$ 94.950	5.0%	\$ 4.748	\$ 90.203	+ shipping - see freight notes	48
49	Other: Horseshoes & Quoits	6	10	St. Pierre Pitching Horseshoes - Eagle Tournament Set - in Corrugated ES2	St. Pierre	ES2	SET	\$ 74.950	5.0%	\$ 3.748	\$ 71.203	+ shipping - see freight notes	49
50	Other: Horseshoes & Quoits	6	10	St. Pierre Pitching Horseshoes - Eagle Tournament Pair - in Corrugated ES1	St. Pierre	ES1	PAIR	\$ 49.950	5.0%	\$ 2.498	\$ 47.453	+ shipping - see freight notes	50